



FORMA

Three specialist practices, one collaborative studio.

FORMA delivers architecture, remediation, and **education** projects shaped by clarity, technical expertise, and purpose.

Architects | Remediation | **Education**





Architecture that simplifies complexity
and delivers results.

Clarity

"clarify, guide, deliver"
"clear direction"
"clear communication"

Practical / Buildable

"well-resolved"
"avoid unnecessary variation"
"construction realities"

Reduce Risk

"avoid costly detours"
"navigate complexity"
"confidence"

Value over design ego.

"value, not overdesign"

COMPANY STRUCTURE.



FORMA builds on over 40 years of architectural experience, evolving from Waitakere Architects into a delivery-focused practice across Education, commercial, and remediation sectors.

With experience delivering projects from \$50k to \$40m, we provide end-to-end design services supported by a trusted consultant network, bringing clarity to complex projects, reducing risk, and delivering practical, buildable outcomes—regardless of project scale.

Company size

5 staff, flexible and scalable with strong local presence and established consultant network.

Resource

End-to-end design delivery with in-house capability and a trusted network to resolve projects of any scale.

History

Over 40 years delivering projects across diverse sectors, with deep expertise in education and complex works.

Value

Clear, build-able solutions that reduce risk and support confident project delivery.

Value Driven Design

We design with purpose — aligning each project with its values while delivering exceptional results and value for money.



Sustainability and Future Thinking

Designing for long-term use, we create buildings that can evolve with their users — reducing waste and increasing value over time.



Design Stewardship

We manage the entire project journey, balancing design integrity with real-world needs, collaboration, and care.



WIDER POSITION



FORMA
PROJECTS

Architects | Remediation | Education

FORMA
ARCHITECTS

Commercial architecture delivering clear, buildable solutions across a range of project types.

The practice works with developers and project teams nationwide, providing coordinated design services that support efficient procurement, documentation, and construction delivery.

REFORMA
REMEDIAATION ARCHITECTS

Remediation and complex works, including weathertightness, structural upgrades, and projects within live environments.

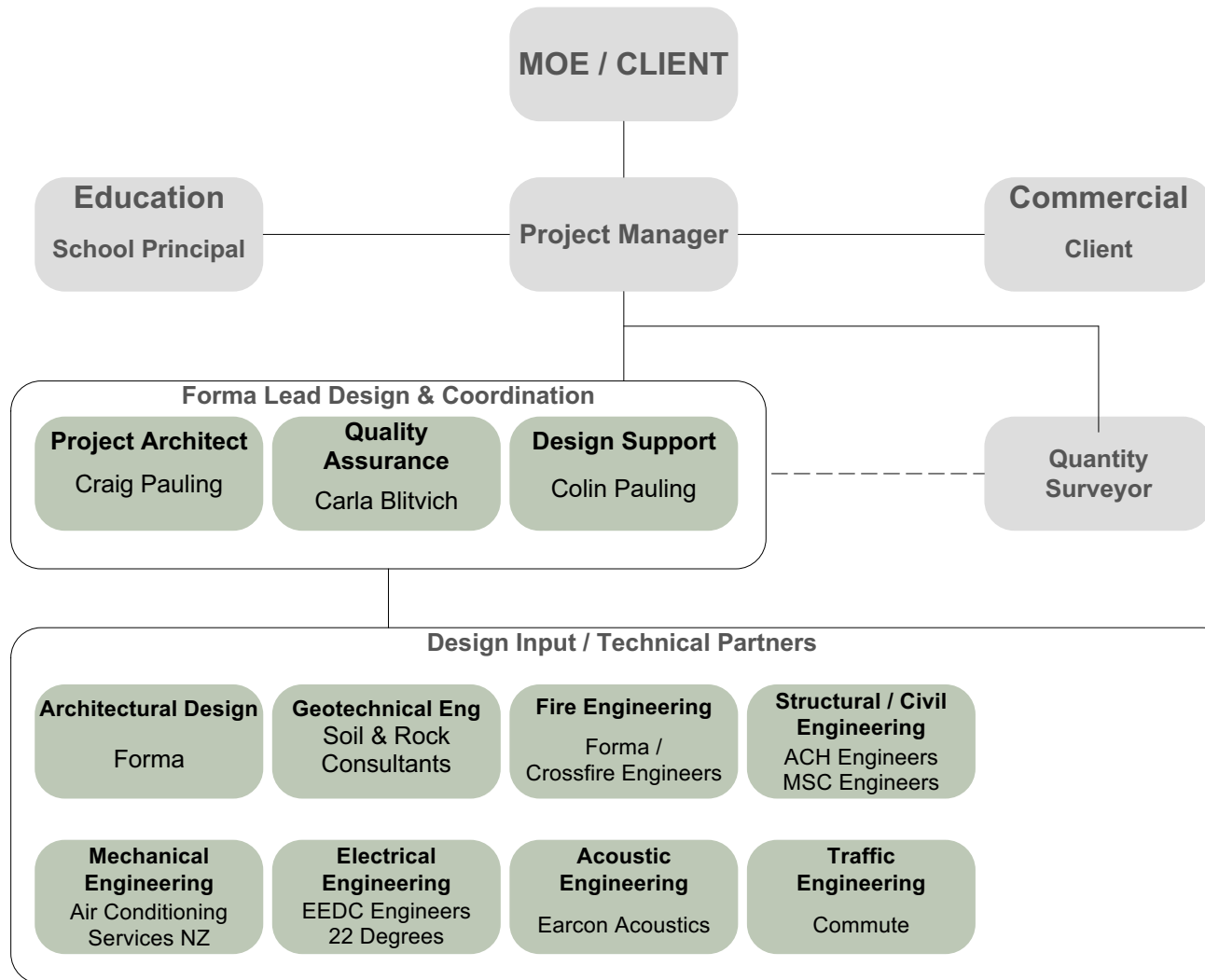
The practice has a strong understanding of Ministry of Education remediation requirements and delivers coordinated, compliant solutions.

EDUFORMA
EDUCATION ARCHITECTS

Education-focused architecture with over 40 years of experience and hundreds of completed projects.

The practice has a detailed understanding of Ministry of Education standards, processes, and existing building stock, with experience across a wide range of school environments, building types, and project scales.

DELIVERY TEAM STRUCTURE



KEY PERSONNEL



Craig Pauling

NZRAB Registered Architect
Master of Architecture (Professional)
Bachelor of Architectural Studies BAS

Contact:
craig@formaprojects.co.nz
02103450446

Professional Summary

Craig specialises in education, remediation, and commercial projects, with extensive experience delivering Ministry of Education work and a detailed understanding of MoE standards, processes, and existing building stock. His experience includes projects of all scales, including major developments such as Franklin Hospital.

He brings a highly integrated approach to project delivery, with a strong working knowledge of building services including fire, mechanical, electrical, and hydraulic systems. This allows key technical aspects to be considered and resolved early in the design process, reducing risk, improving coordination, and supporting efficient construction outcomes.

Craig takes a practical and considered approach to design, focusing on resolving complexity upfront, maintaining clarity throughout the process, and avoiding unnecessary complication. His role as lead consultant ensures clear direction across all disciplines, with strong oversight of both design and delivery.



Carla Blitvich

NZRAB Registered Architect.
Western Australia Registration
Master of Architecture (M.Arch)
Bachelor of Environmental Design
(B.EnvDes)
Statement of Attainment in Interior
Design

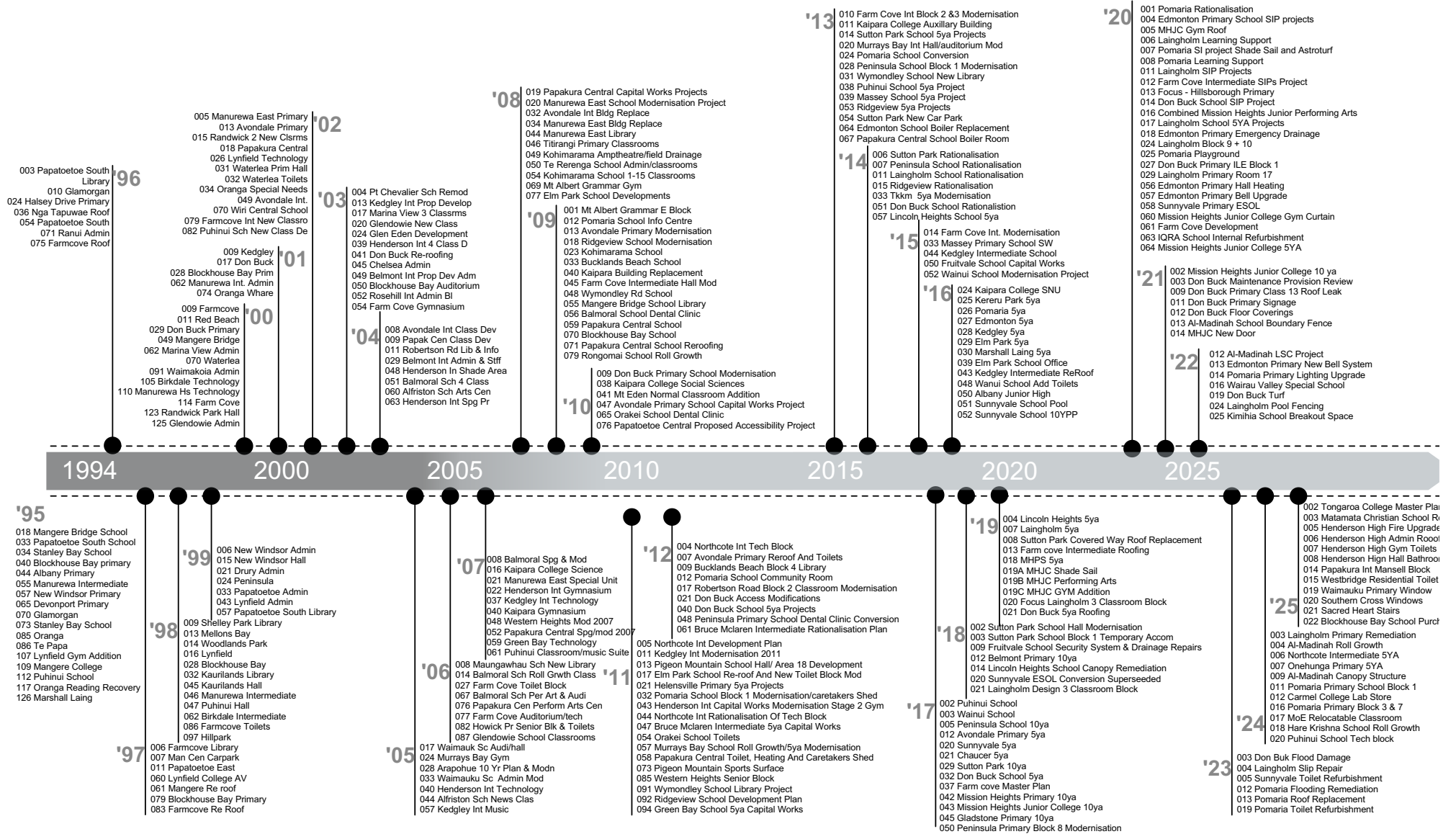
Contact:
carla@formaprojects.co.nz
0226911230

Professional Summary

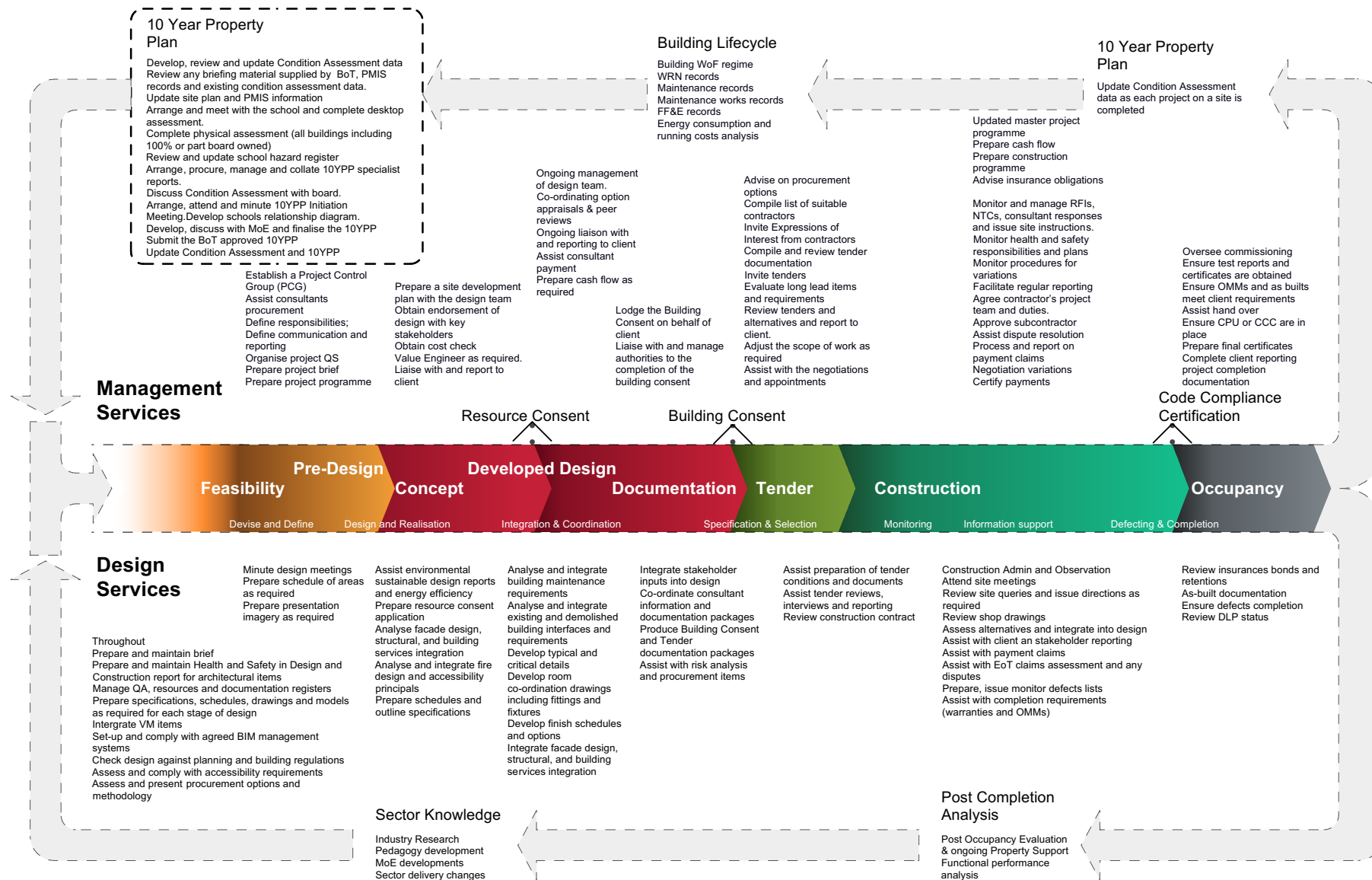
Carla is a New Zealand and Western Australia registered architect with over 10 years' experience delivering projects across education, commercial, and retail sectors. She has worked across all project stages, from concept design through to documentation and construction delivery.

Her experience includes leading projects, coordinating consultant teams, and managing contract administration, ensuring projects are well-resolved and delivered in accordance with programme, budget, and compliance requirements. Carla has a strong focus on documentation and coordination, with experience integrating architectural and building services requirements to support clear and efficient project delivery. She brings a practical and detail-oriented approach, ensuring design intent is maintained through to construction.

EDUCATION EXPERIENCE



OUR APPROACH



CASE STUDIES.





A new school gymnasium complex attached to an existing aquatic centre.

Scope

Overlooking the main sports fields and backing on to the neighbouring aquatic centre, the Mount Albert Grammar School Gymnasium provides state of the art sporting facilities for use by the school and local sports teams.

Two light wells draw natural light into the space, controlled by louvre to moderate temperature throughout. Acoustic plywood panels are utilised to significantly reduce noise throughout the gymnasium. The main gymnasium accommodates up to 600 people.

Services

- design and documentation
- coordination of all consultants
- preparation, lodgement of building consent applications
- arranging stormwater discharge consents
- procurement
- coordination with signage
- contract administration
- construction observation



2) - LAINGHOLM ROLL GROWTH



A new classroom block for Laingholm Primary School.

Scope

Engaged by the Ministry of Education to design a new 3 classroom roll growth development overlooking the school's sports fields. This design was completed to meet the school's strategic plan & conform with all the MoE's guidelines and requirements suitable for tendering as a design & construction.

The building is perched to provide views out over the sports fields and all of Auckland. The all-day sun and large learning environment allow the children to learn and grow in the best setting possible.

The facility includes:

- Toilet facilities.
- Basement workshop and storage facilities.
- 3x Teaching areas.
- Breakout spaces/withdrawal areas.
- Extensive covered outdoor learning areas.

Services

- design and documentation
- coordination of all consultants
- preparation, lodgement of building consent applications
- procurement
- contract administration
- construction observation & reporting





Various 5YA projects across Auckland.

Scope

EduForma has a long history of delivering 5YA capital works across a wide range of school environments, including upgrades, modernisation, and reconfiguration of existing facilities. Project scope varies significantly, requiring a flexible and well-coordinated approach.

Successful delivery relies on a detailed understanding of Ministry of Education requirements and the realities of working within live school environments. Key challenges include meeting MoE design standards, responding to stakeholder expectations, and delivering robust, high-quality outcomes within tight budget constraints.

Services

- Lead Design Services
- Design and documentation
- Coordination of all consultants
- Preparation, lodgement of consent applications
- Contract administration
- Construction observation
- Quantity Surveying



3) - 5YA EDUFORMA



4) - DON BUCK LIBRARY EDUFORMA



A new school library at Don Buck Primary School.

Scope

The schools existing Library and resource room was located in two old relocatable classrooms that were well passed their use by date: Using 5YA Funding and the rationalisation program the scope was to remove the old relocatable classrooms and replace it with a new Library as an extension to the Classroom block 1 and modernise at the same time an unused area to provide resource room and teacher work areas.

The new light and inspirational Library located in the centre of the school. Most non-fiction is accommodated for online The New library caters for student needs with non-fiction and periodical material with indoor and outdoor space to sit and enjoy.

Services

- Full project management services from inception to completion and MoE closure
- Brief and preliminary concept development including stakeholder workshops and MoE interface
- discussion management.
- Detailed Design documentation for building consent and contractor procurement
- Construction observation
- Contract Administration
- Defect and final closure requirements



5) - NORTHSIDE CAR SHOWROOM



A new car dealership in Westgate, Auckland.

Scope

New build automotive showroom comprising three vehicle brands, integrated parts retail, and a full-service workshop, delivered as a high-end commercial facility.

The project includes complex civil works and site development to enable the scale and operational requirements of the dealership. A key focus is delivering a premium customer experience while accommodating the functional demands of servicing, storage, and vehicle movement. The design incorporates detailed brand fitout requirements across multiple tenancies, requiring precise coordination to achieve consistency, compliance, and a cohesive overall outcome.

Services

- Design and documentation
- Coordination of all consultants
- Preparation, lodgement of resource and building consent applications
- Tenancy Coordination
- Contract administration
- Construction observation
- Quantity Surveying



6) - FRANKLIN HOSPITAL



A new private hospital development in Franklin.

Scope

New build \$40 million private hospital development, 3500m² floor area over 3 stories and consisting of 3 operating theatres, urgent care, MRI, post operation and recovery. Designed to fit into the local context with a colour palette reflecting the local agriculture professions. This hospital is designed to a high-level finish and is expected to be a leading private hospital to the Auckland region.

Services

- design and documentation
- coordination of all consultants
- preparation, lodgement of building consent applications
- arranging dangerous good approval and certification
- coordination with tenant signage, IT and fitout
- construction observation



7) - HOLY TRINITY CHURCH



Seismic strengthening, restoration and extension of a Devonport heritage church.

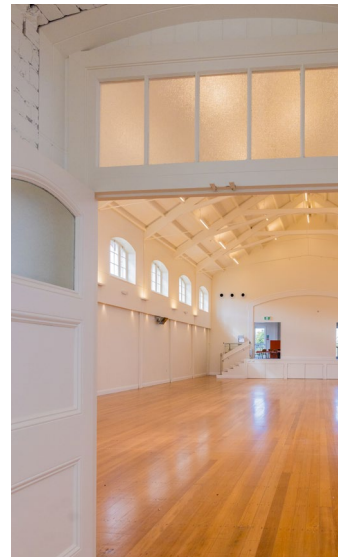
Scope

Award-winning seismic strengthening, restoration, and extension of a 1910 heritage church hall in Devonport, integrating old and new to create a safe, flexible, and enduring community space. The project includes refurbishment, structural strengthening, and a new extension to improve functionality and performance while respecting the existing heritage fabric.

Works focus on resolving structural constraints, reconfiguring spaces, and delivering a cohesive, durable outcome suited to a high-use community environment, with careful coordination of new and existing elements throughout.

Services

- design and documentation
- coordination of all consultants
- preparation, lodgement of building consent applications
- procurement
- construction Observation & Administration
- quantity Surveying





Reclad and seismic strengthening of commercial units in Auckland.

Scope

16 two storey commercial units with structural, fire and weathertightness failures were completely stripped back to the structure, repaired and upgraded. These buildings were un-insurable prior to the assistance of Reforma.

We were engaged by the body corporate to upgrade the building on the most modest budget possible, with some wider picture thinking the repairs were completed in a like for like manner – saving the client over a million dollars in capital upgrade tax availability.

Completed over 4 stages the building were occupied and open to the public at all points in time.

Services

- design and documentation
- coordination of all consultants
- preparation, lodgement of building consent applications
- procurement
- construction Observation & Administration
- quantity Surveying



9) - WOOLWORTHS



Reclad and modernisation of Woolworths.

Scope

Reclad and modernisation of the tenanted Woolworths Sunnynook building, resolving long-standing cladding failure and weathertightness issues to deliver a durable, long-term solution. The project required compliance with Woolworths design standards while maintaining strict cost control for the client. Delivered within a live retail environment, the works were carefully staged to ensure the store remained fully operational. The project demanded rapid design responses and close coordination to address inconsistencies between existing conditions and historic documentation.

Services

- Design and documentation
- Coordination of all consultants
- Preparation, lodgement of building consent applications
- Tenancy and Body Corporate Coordination
- Contract administration
- Construction observation
- Quantity Surveying

